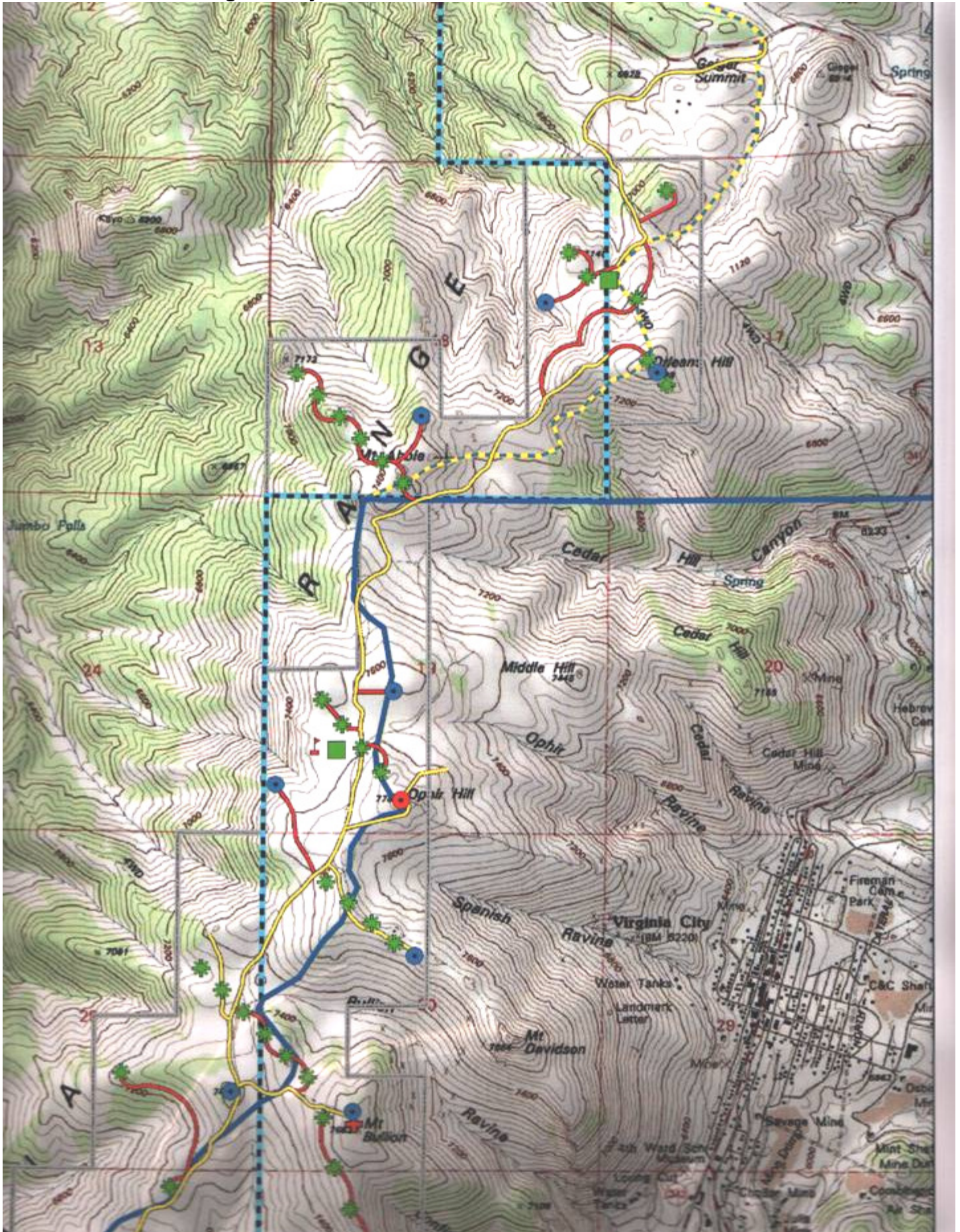
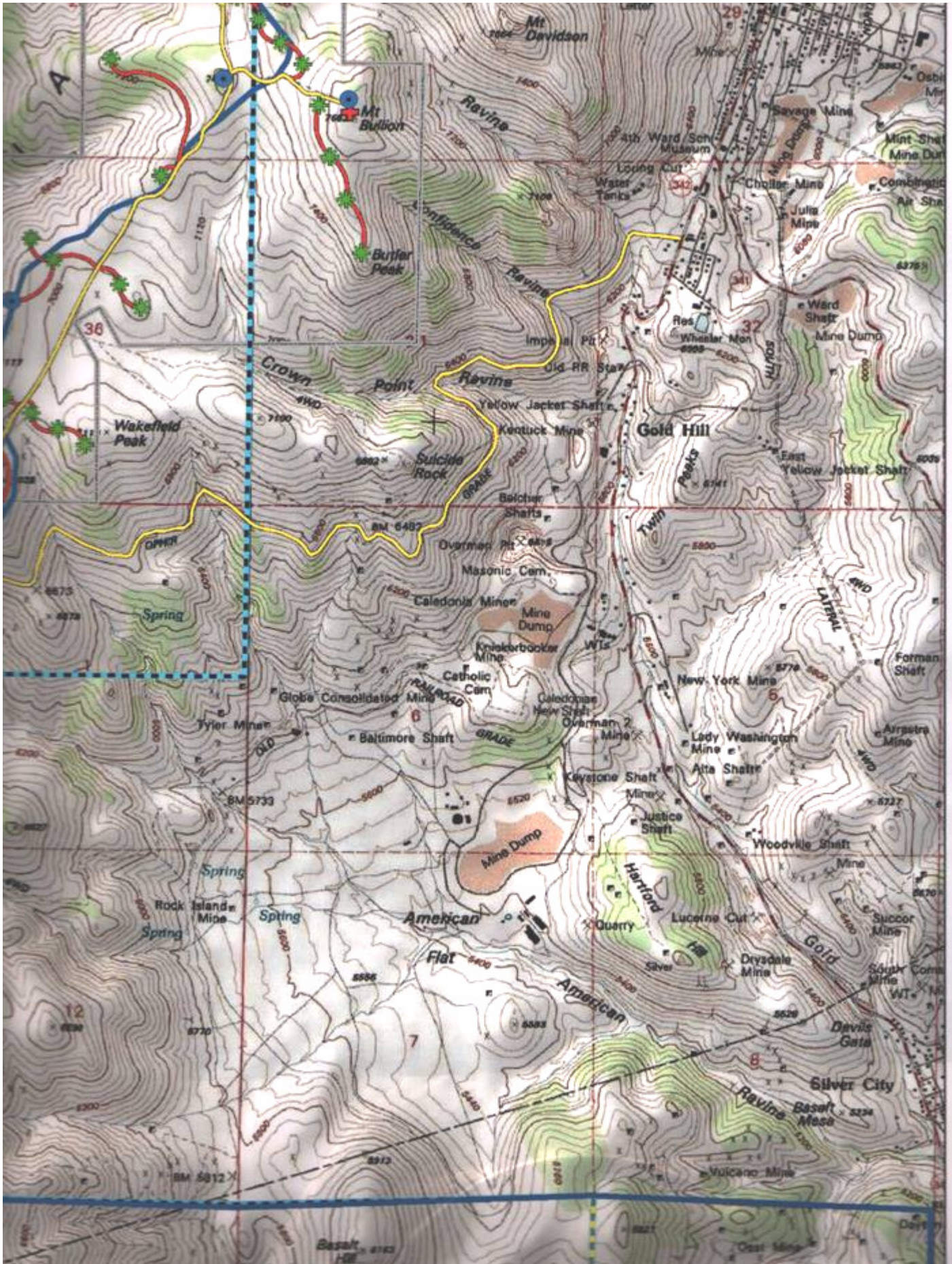


# Turbine Nearest to Virginia City



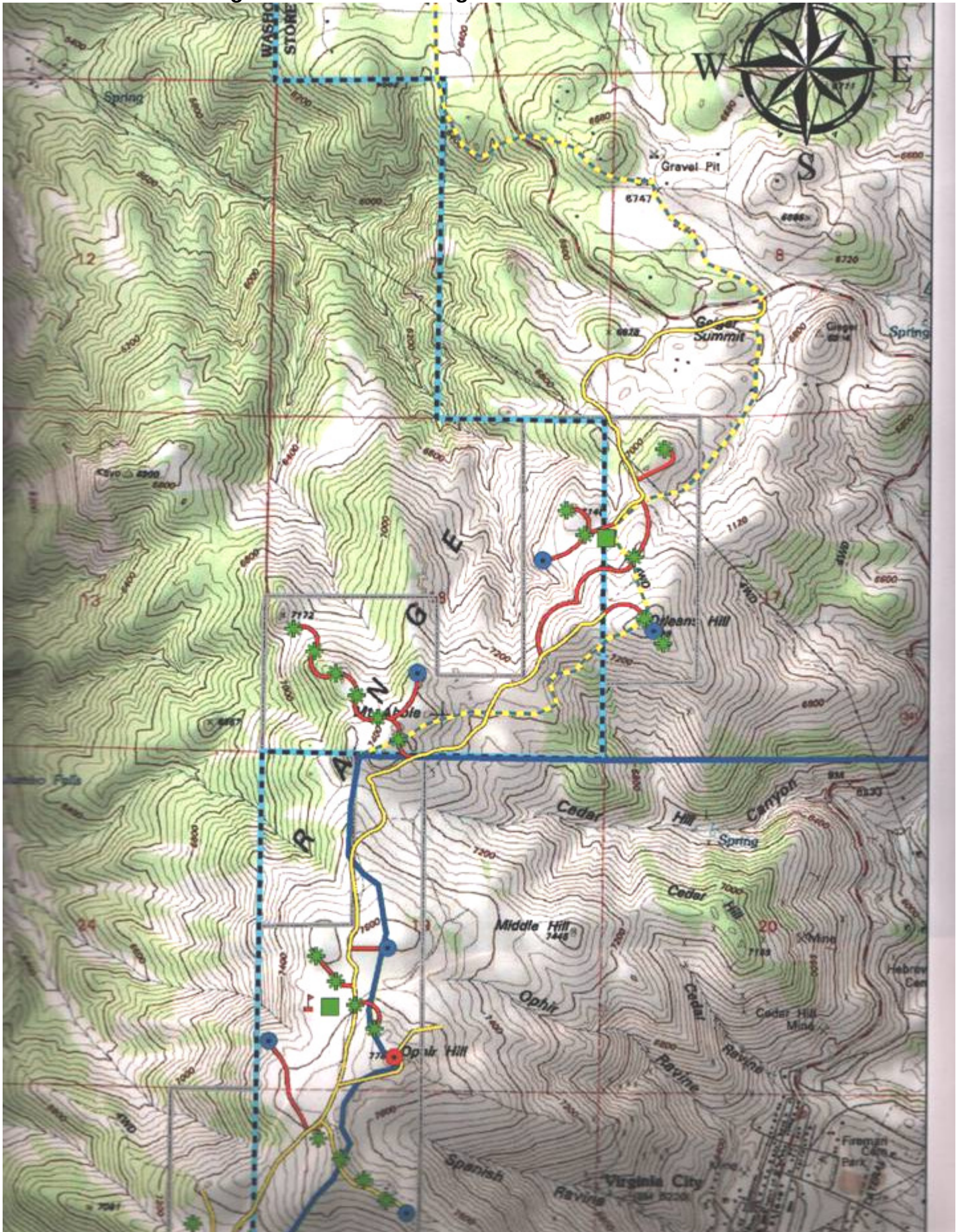


# Turbine Nearest to Gold Hill



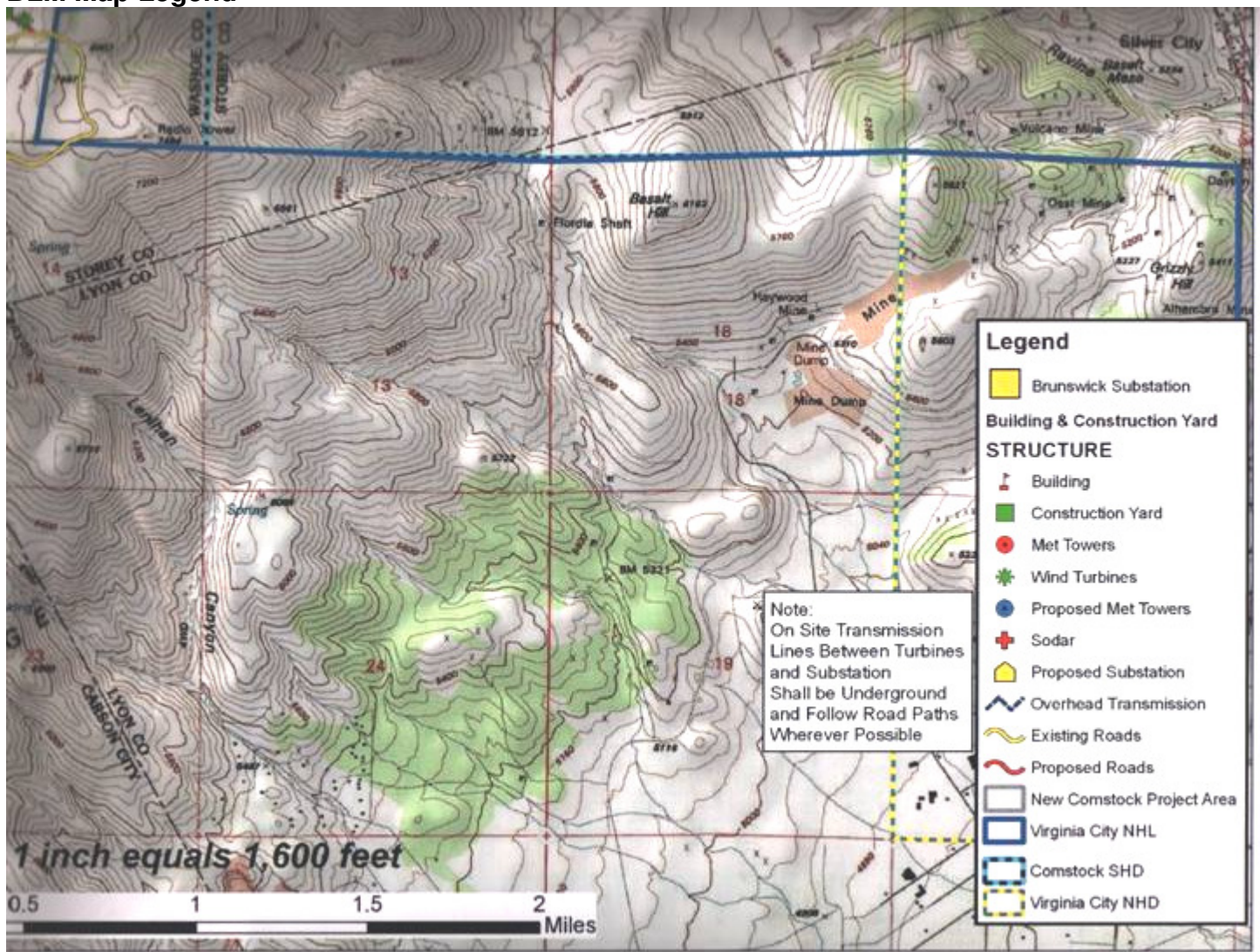


# Turbine Nearest to Geiger Summit and the Highlands



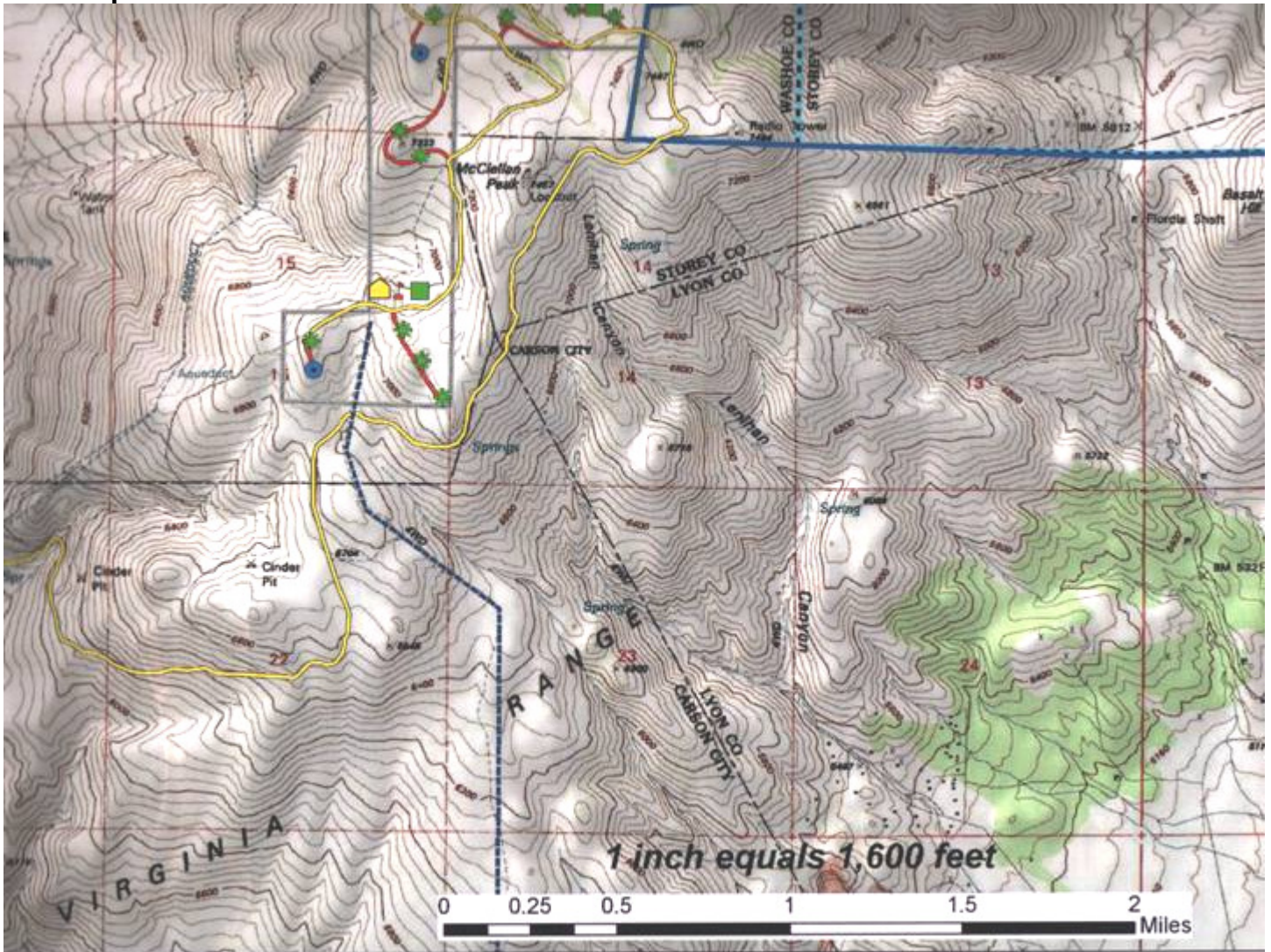


# BLM Map Legend





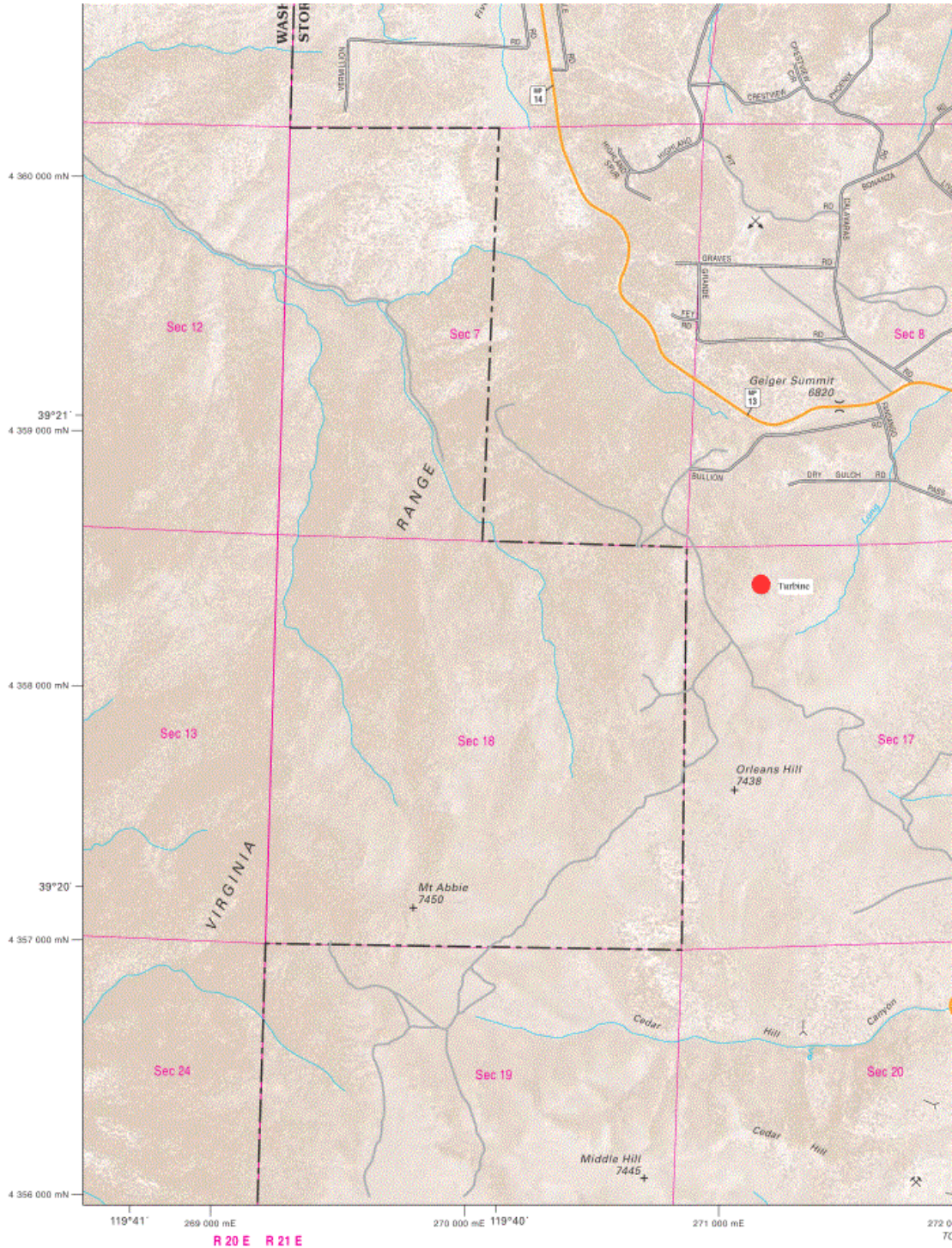
# BLM Map Scale



{ BLM Map scanned by Jed Margolin }



**Section From Nevada Department of Transportation Map – Virginia Highlands:**  
<http://www.nevadadot.com/traveler/maps/areamaps/pdfs/VirginiaHighlands.pdf>



VIRG

Mean Elevation 6,500'

Transverse Mercator Projection 1983  
 Mount Diablo Base and Meridian  
 1,000 Meter Universal Transverse  
 Mercator Grid Zone 11  
 North American Datum 1983

Horizontal and vertical control data on  
 file at Carson City, Nevada.

Copyright © 2007  
 Nevada Department of Transportation

Orthophoto courtesy of USDA NAIP  
 Photography date: 2005

- Freeway, Federal
- Highway, Federal
- Highway, State
- Other Paved Road
- Improved Surface
- Unimproved
- Interchange Number
- Interstate Milepost Marker
- Interstate Milepost Marker (by County)
- US or State Route Milepost Marker (by County)
- NDOT Bridge Number
- Nevada Historical Marker

